

## Anti-Rust & Thermal Insulation Paint (M168)

---

### PREPROCESS

- Use brushes with high-pressure water supply to remove all the dusts and clean the metal surface.
- The application surface should be 100% clean, before treating with M168.

### PREPARATION AND APPLICATION

- For 1<sup>st</sup> layer:
  - New metal:** Mix M168 with 30 - 40% water (depends on weather condition)
  - Rusty metal:** Mix Agent B (150g) with 6 - 8 kg water (depends on weather condition), followed by adding M168 and stir properly. Recommend to coat two layers. (Make sure that it is well mixed prior to applying)
- For 2<sup>nd</sup> & 3<sup>rd</sup> layer, mix M168 with 10% water. Ensure that any unsettled pigment is well dispersed.
- Allow at least 2 hours of drying time between coats. At damp or humid weather may lengthen the drying time.
- Hard dry 4 hours and full cure in 2 - 3 days
- It can apply crosswise between coats, spray nozzle should be taken within 30 cm from surface while spraying.
- Apply at least two layers of M168 coat in order to achieve 0.6 kg/m<sup>2</sup>.
- Allow 24 hours drying time before water contact.

### CAUTION

- Apply when air, material, and surface, the best operating temperature range is between 5 - 40°C, and humidity is less than 85%, please check with weather condition before applying M168 admixture.

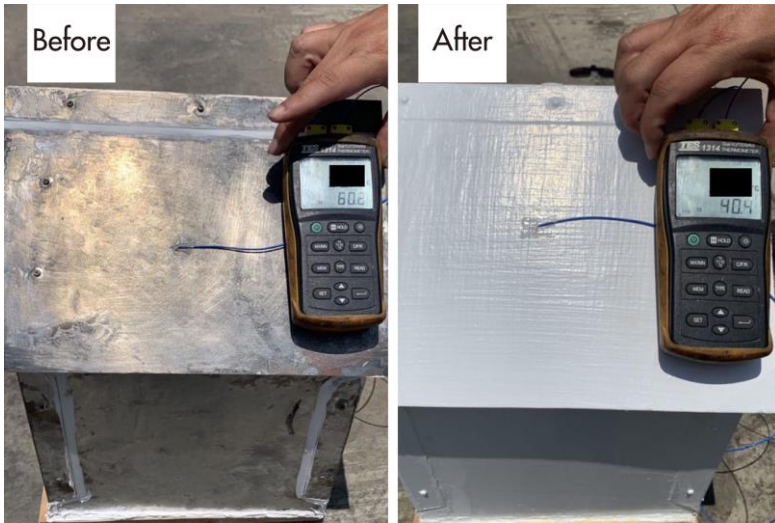
### USAGE

- Approximately: 0.25 - 0.4 kg/m<sup>2</sup> (per layer)
- Film thickness: 60 microns (µm, per layer)
- Thinner: water
- Recommended use: the metal sheet of warehouse, container, factory, animal farming, etc.

### PACKAGING

- M168: 20kg / pail
- Agent B: 0.75kg / sachet

**RESULT**



Applying M168 can reduce exterior temperature up to 20 degrees.



M168 would decrease the temperature indoor, however, how many degrees it can reduce is depend on the condition of the building. When the room is bigger, the temperature it reduces will be less compared to the smaller room...etc.